



Technical Analysis

Alpari Financial Services (India) Pvt. Ltd.
76 C, 3 North Avenue
Maker Maxity, Bandra Kurla Complex
Bandra East, Mumbai 400 051

+91-22-6156 3000 **T**
+91-22-6156 3001 **F**
info@alpari.co.in **E**
www.alpari.co.in **W**

4th November 2011

Technical Reports for EUR/USD

EUR/USD ST: Caution.

Our pivot point stands at 1.3715

Our preference: LONG positions above 1.3715 with 1.386 & 1.3935 in sight.

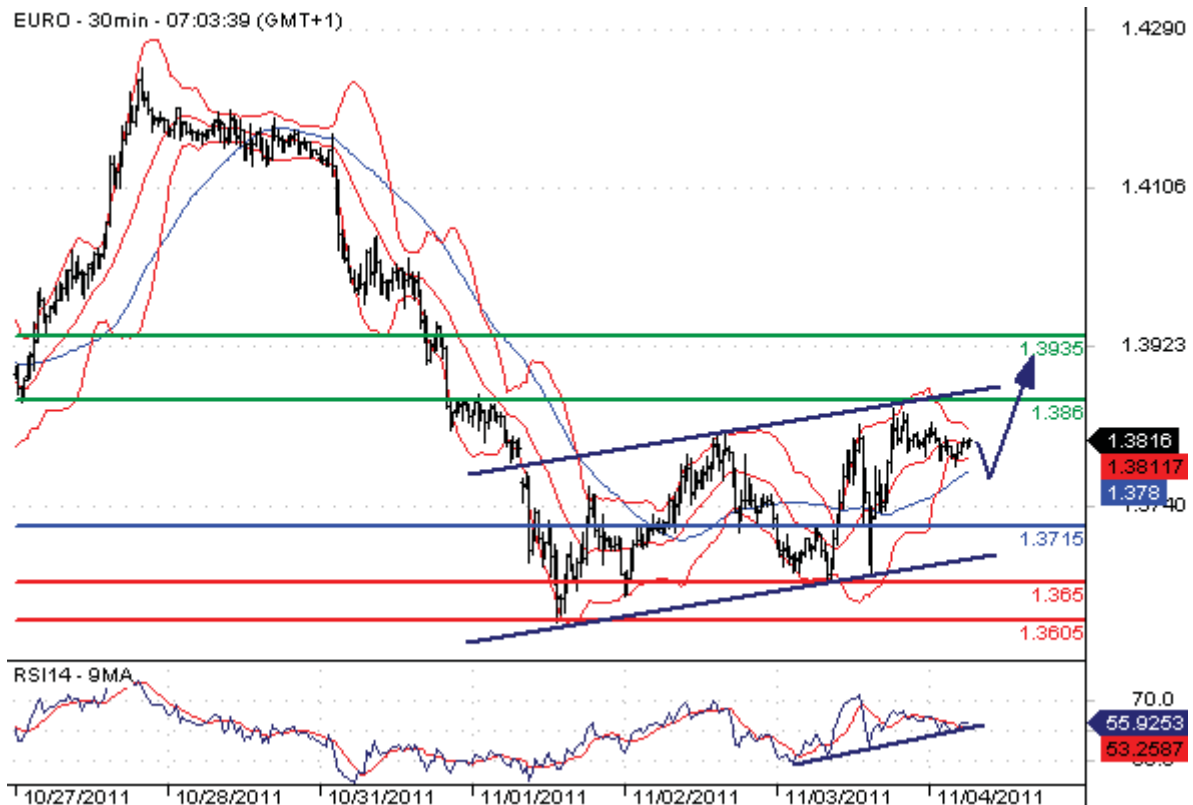
Alternative scenario: The downside breakout of 1.3715 will open the way to 1.365 & 1.3605.

Comment: The RSI is supported by a rising trend line; the pair is approaching its resistance.

Support & Resistance:

- 1.4035** Intraday resistance
- 1.3935** Intraday resistance
- 1.386** Intraday resistance
- 1.3815 Last
- 1.3715** Intraday pivot point
- 1.365*** Intraday support
- 1.3605** Intraday support

EURO - 30min - 07:03:39 (GMT+1)



Technical Reports for GBP / USD

GBP/USD ST: The upside prevails.

Our pivot point stands at 1.5920.

Our preference: LONG positions above 1.592 with targets @ 1.606 & 1.609.

Alternative scenario: The downside breakout of 1.592 will open the way to 1.587 & 1.582.

Comment: The pair is challenging its resistance; the RSI is mixed to bullish.

Support & Resistance:

1.615** Intraday resistance

1.609** Intraday resistance

1.606** Intraday resistance

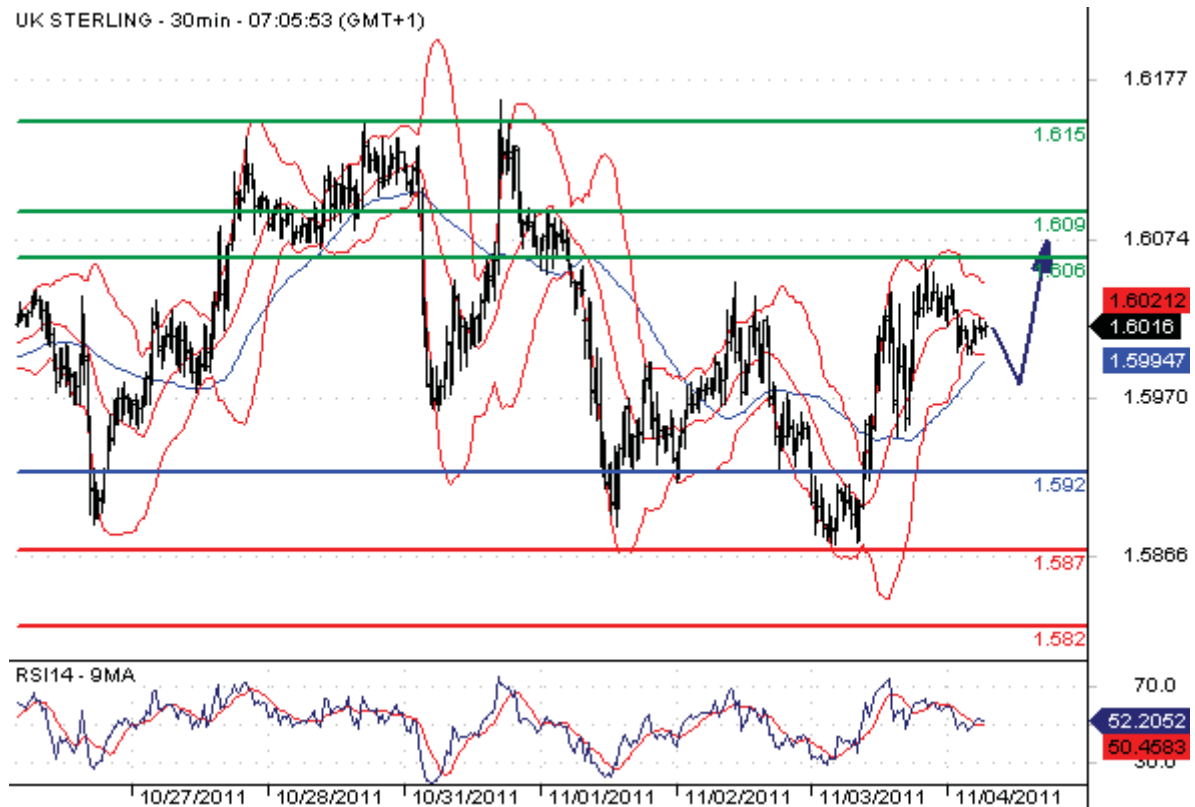
1.6016 Last

1.592** Intraday pivot point

1.587** Intraday support

1.582** Intraday support

UK STERLING - 30min - 07:05:53 (GMT+1)



Technical Reports for USD / JPY

USD/JPY ST: Under pressure.

Our pivot point stands at 79.

Our preference: SHORT positions below 79 with 77.2 & 76.5 as next targets.

Alternative scenario: The upside penetration of 79 will call for 79.6 & 80.1.

Comment: The pair stands below its resistance and should face a weakness.

Support & Resistance:

80.1** Intraday resistance

79.6** Intraday resistance

79** Intraday pivot point

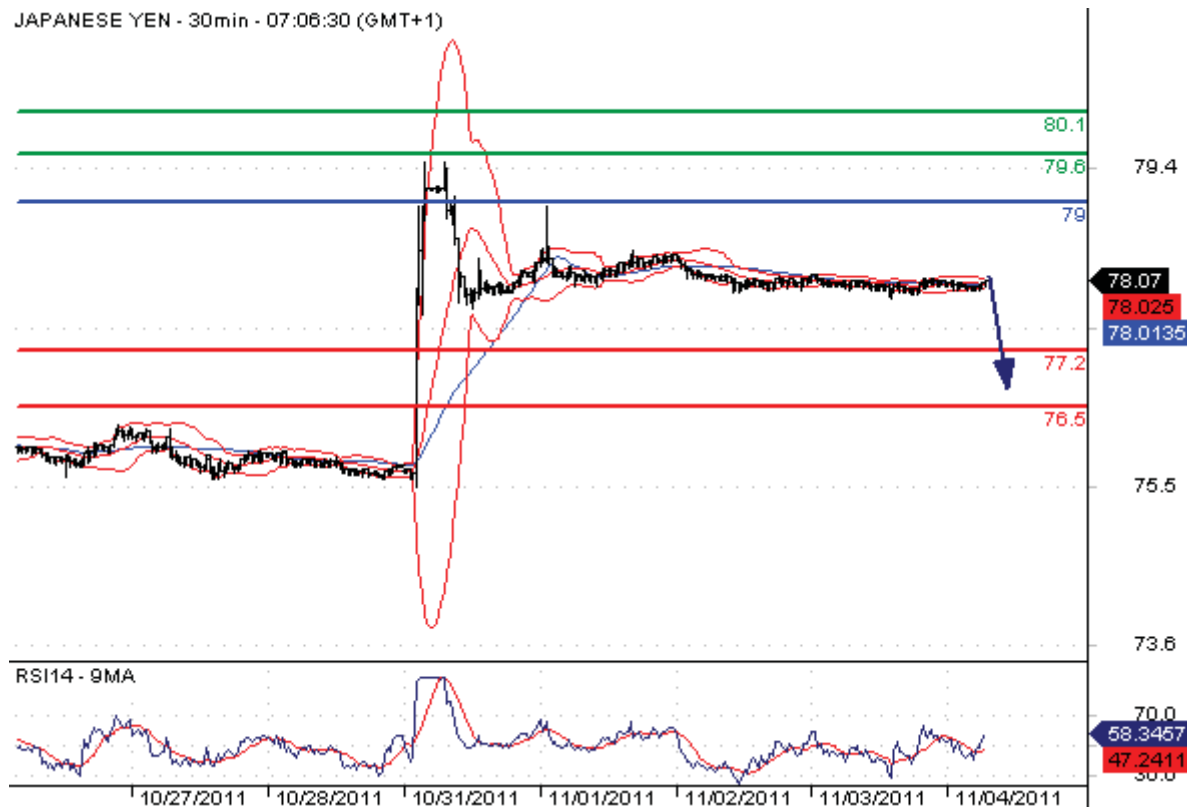
78.07 Last

77.2** Intraday support

76.5** Intraday support

76** Intraday support

JAPANESE YEN - 30min - 07:08:30 (GMT+1)



Disclaimer:

Alpari Financial Services (India) Pvt. Ltd. is a 100% fully owned subsidiary of Alpari (UK). Alpari (UK) provides an execution-only service. The material contained here does not contain (and should not be construed as containing) investment advice or an investment recommendation, or, an offer of or solicitation for, a transaction in any financial instrument. Alpari (UK) accepts no responsibility for any use that may be made of these comments and for any consequences that result. This communication must not be reproduced or further distributed. All information in this publication has been compiled from publically available sources that are believed to be reliable; however we cannot guarantee the accuracy of all information. All information and documentation associated with this report has been produced for the purposes of providing the report only. Please remember that trading financial markets carries a high degree of risk to your capital. It is possible to lose more than your initial stake. Leveraged products may not be suitable for all investors, therefore please ensure you fully understand the risks involved, and seek independent advice if necessary.