

Technical Analysis

Alpari Financial Services (India) Pvt. Ltd.
76 C, 3 North Avenue
Maker Maxity, Bandra Kurla Complex
Bandra East, Mumbai 400 051

+91-22-6156 3000 **T**
+91-22-6156 3001 **F**
info@alpari.co.in **E**
www.alpari.co.in **W**

17th April 2012

Technical Reports for EUR/USD

EUR/USD ST: Limited upside.

Pivot: 1.3090.

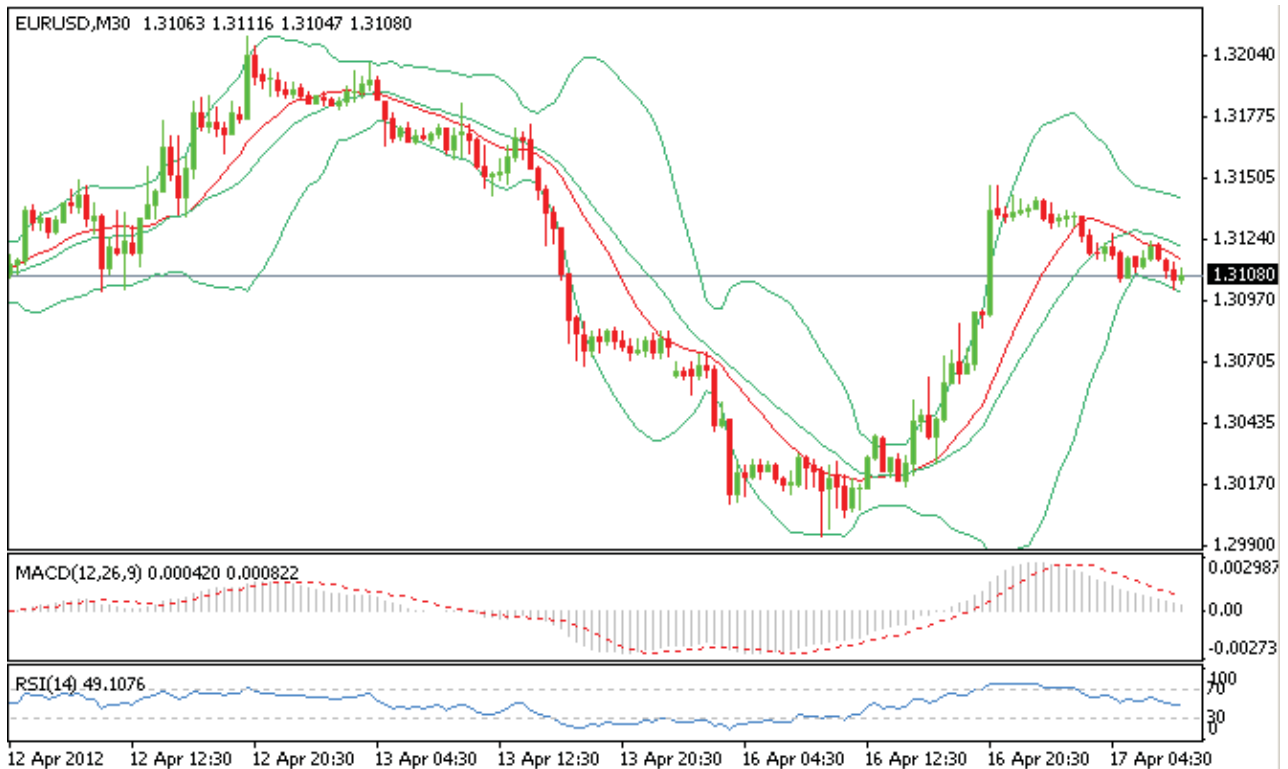
Our preference: LONG positions above 1.309 with 1.3155 & 1.319 in sight.

Alternative scenario: The downside penetration of 1.309 will call for 1.304 & 1.299.

Comment: The pair stands above its new support and remains on the upside.

Support & Resistance:

- 1.3215** Horizontal resistance
- 1.319** Horizontal resistance
- 1.3155** Horizontal resistance
- 1.3111 Last
- 1.309** Intraday pivot point
- 1.304** Horizontal support
- 1.299** Horizontal support



Technical Reports for GBP / USD

GBP/USD ST: The upside prevails.

Our pivot point stands at 1.5850.

Our preference: LONG positions above 1.585 with 1.591 & 1.595 in sight.

Alternative scenario: The downside breakout of 1.585 will open the way to 1.5805 & 1.578.

Comment: The pair is pulling back on its support.

Support & Resistance:

1.5985** Horizontal resistance

1.595** Horizontal resistance

1.591*** Horizontal resistance

1.5875 Last

1.585*** Intraday pivot point

1.5805** Horizontal support

1.578** Horizontal support



Technical Reports for USD / JPY

USD/JPY ST: Under pressure.

Our pivot point stands at 80.80

Our preference: SHORT positions below 80.8 with 80.2 & 80 as next targets.

Alternative scenario: The upside penetration of 80.8 will call for 81 & 81.2.

Comment: The pair is under pressure and is challenging its support.

Support & Resistance:

81.2** Horizontal resistance

81** Horizontal resistance

80.8*** Intraday pivot point

80.39 Last

80.2*** Intraday support

80** Intraday support

79.8** Intraday support



Disclaimer:

Alpari Financial Services (India) Pvt. Ltd. is a 100% fully owned subsidiary of Alpari (UK). Alpari (UK) provides an execution-only service. The material contained here does not contain (and should not be construed as containing) investment advice or an investment recommendation, or, an offer of or solicitation for, a transaction in any financial instrument. Alpari (UK) accepts no responsibility for any use that may be made of these comments and for any consequences that result. This communication must not be reproduced or further distributed. All information in this publication has been compiled from publically available sources that are believed to be reliable; however we cannot guarantee the accuracy of all information. All information and documentation associated with this report has been produced for the purposes of providing the report only. Please remember that trading financial markets carries a high degree of risk to your capital. It is possible to lose more than your initial stake. Leveraged products may not be suitable for all investors, therefore please ensure you fully understand the risks involved, and seek independent advice if necessary.